



# Journey to green small hydropower

**CUI Zhenhua**

National Research Institute for Rural Electrification (NRIRE), China.

Hangzhou Regional Center (Asia-Pacific) for Small Hydro Power (HRC), China

**E-mail: [zhcui@hrcshp.org](mailto:zhcui@hrcshp.org); [250191770@qq.com](mailto:250191770@qq.com)**

Hangzhou, China

# The Power of Rivers

Support Economies

Feed communities

The most productive ecosystems  
Provide electricity to millions of people





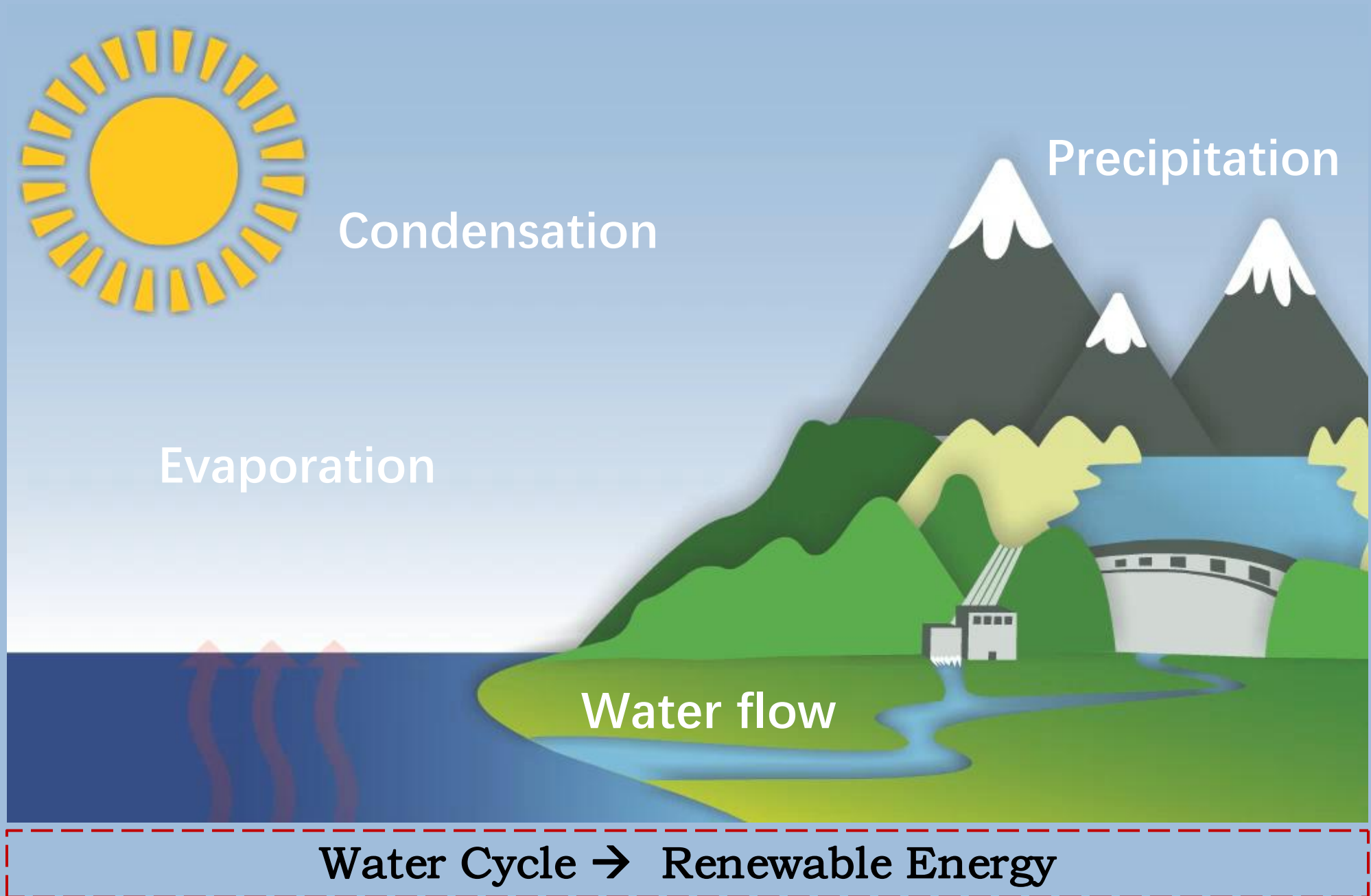
Condensation

Precipitation

Evaporation

Water flow

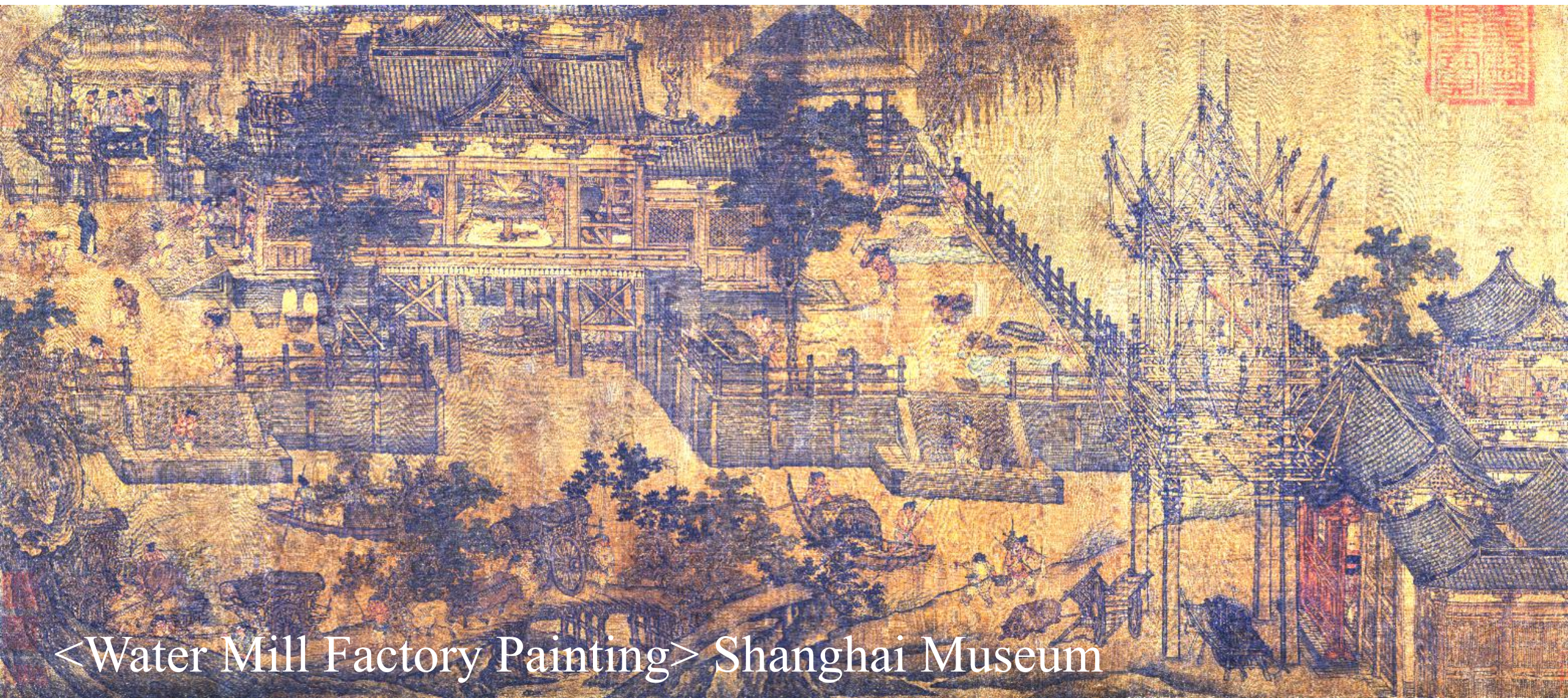
Water Cycle → Renewable Energy





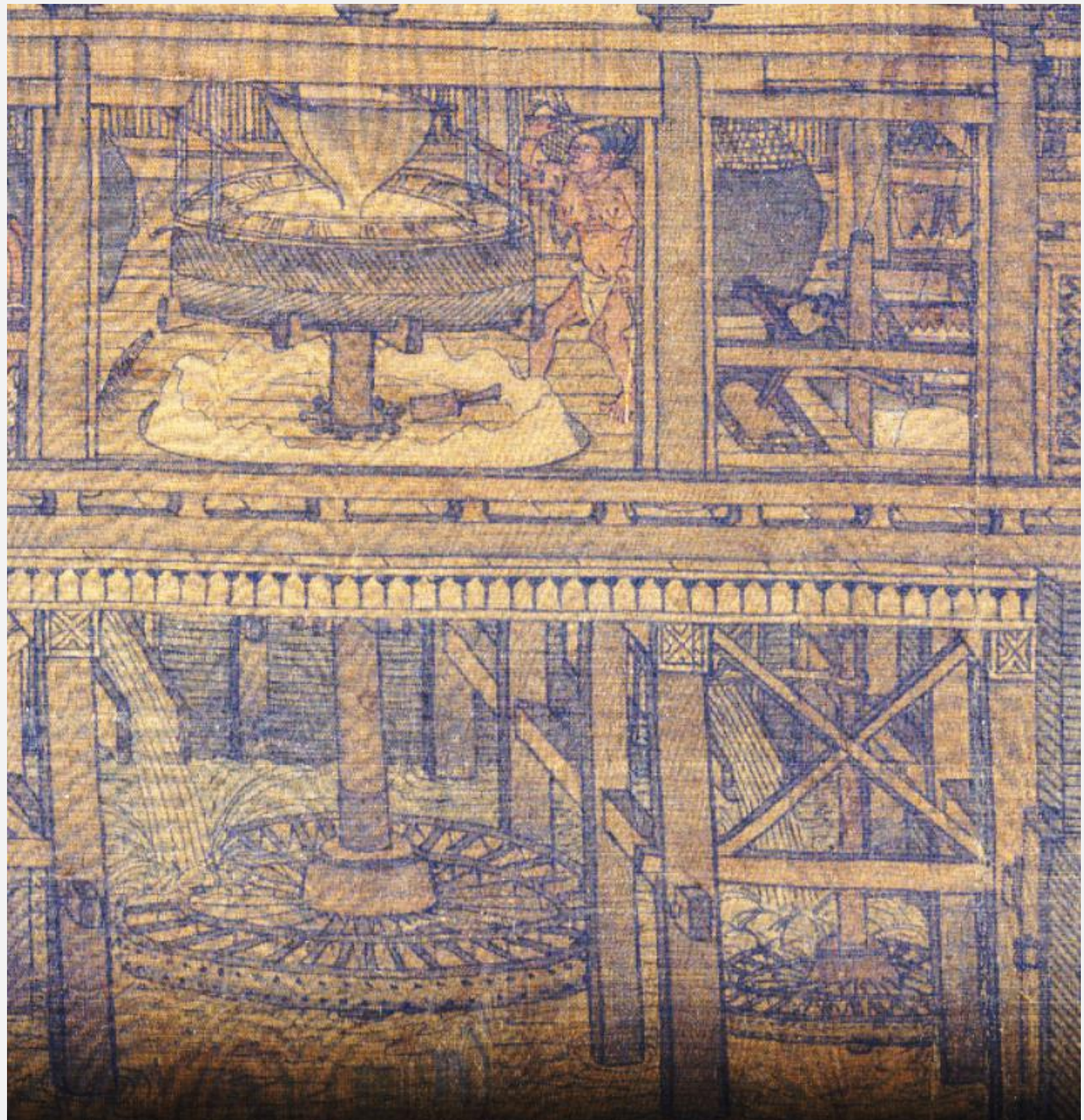
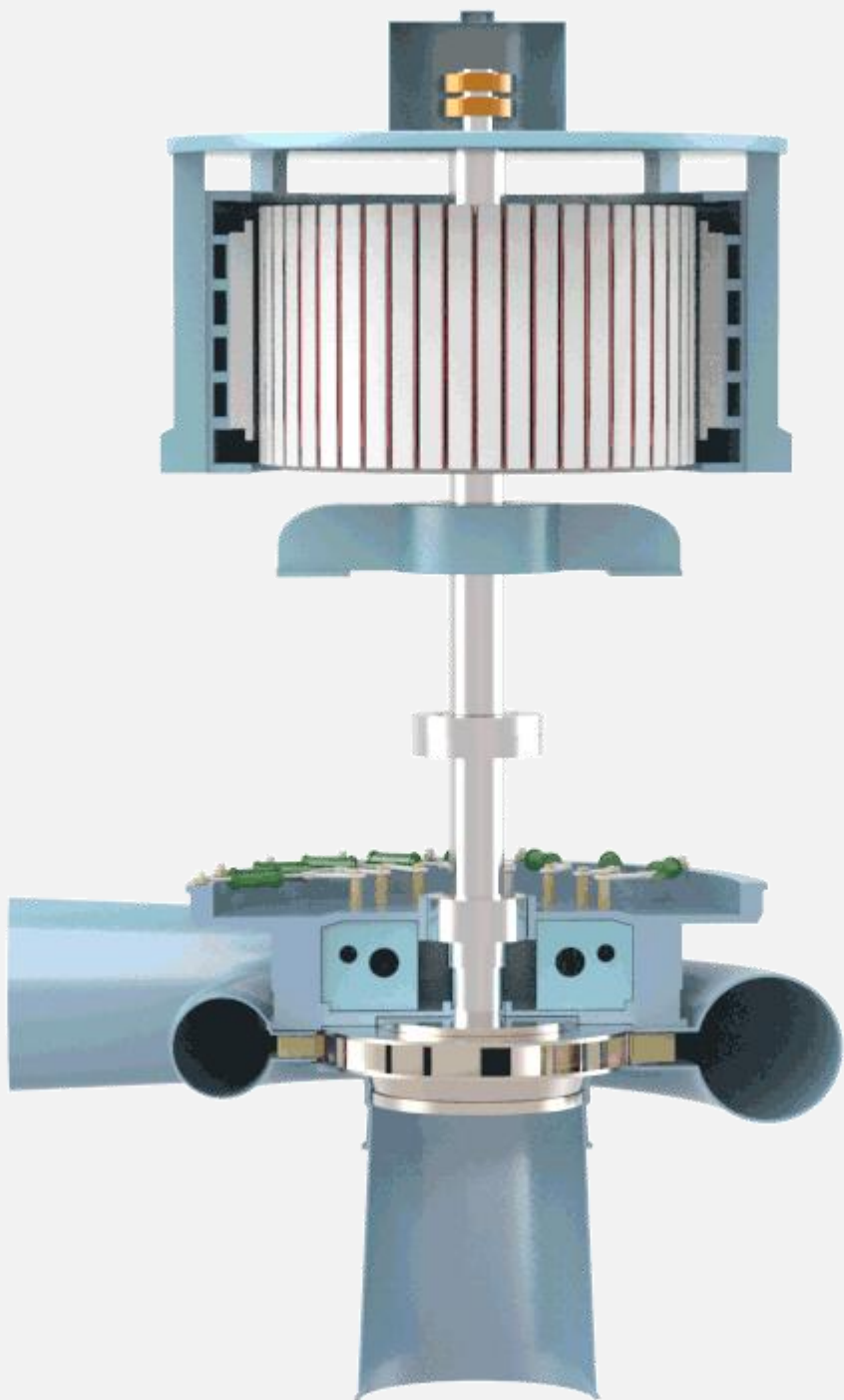


**The first Chinese painting depicting on mechanical facilities  
(more than 1000 years ago)**



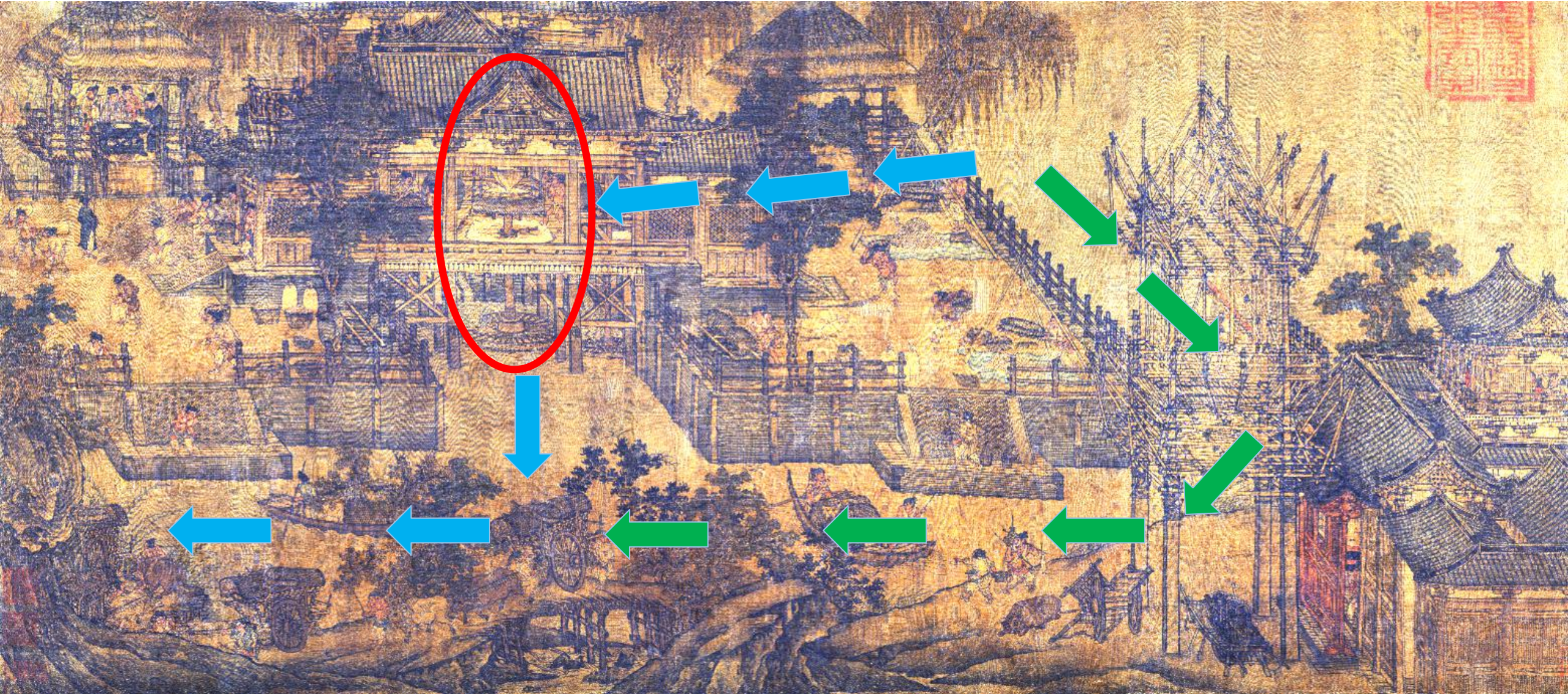
<Water Mill Factory Painting> Shanghai Museum







Sustainable utilization of hydropower is possible if we use it in a suitable way





The journey to green small hydropower

Yunnan

Shanghai

LEGEND

- ★ BEIJING Capital
- ⊙ Tianjin Province-level administrative centre
- International boundary
- Boundary of province, autonomous region, or municipality directly under the central government
- Boundary of special administrative region

1 : 22 000 000

审图号: GS(2019)1682号

自然资源部 监制

# Yunnan





# Shilongba hydropower station



**The first hydropower station in China which was built in 1912**



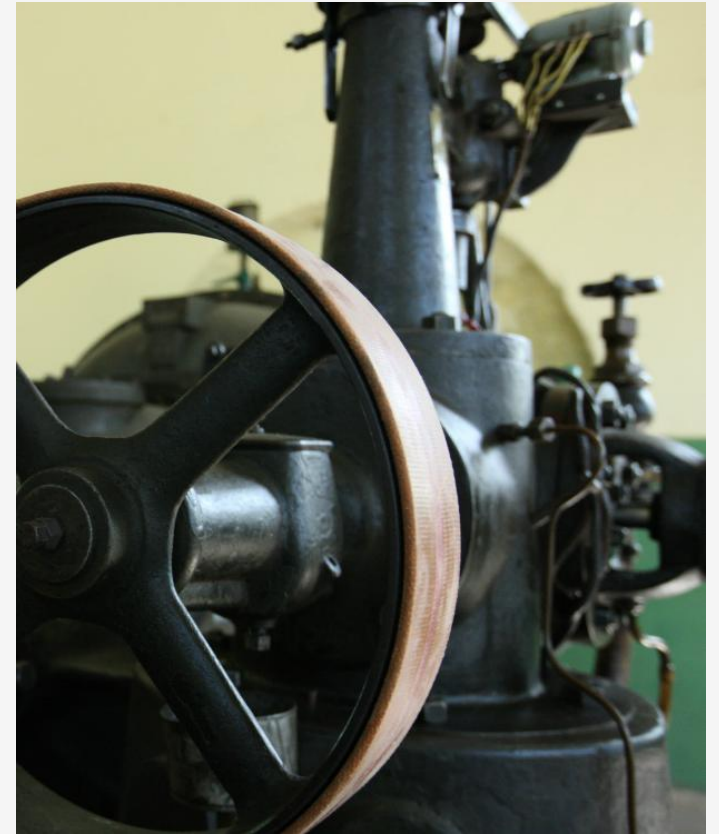
# Shilongba hydropower station



The initial installed capacity: 480kW



# Shilongba hydropower station



**Luminous pearl, little sun**









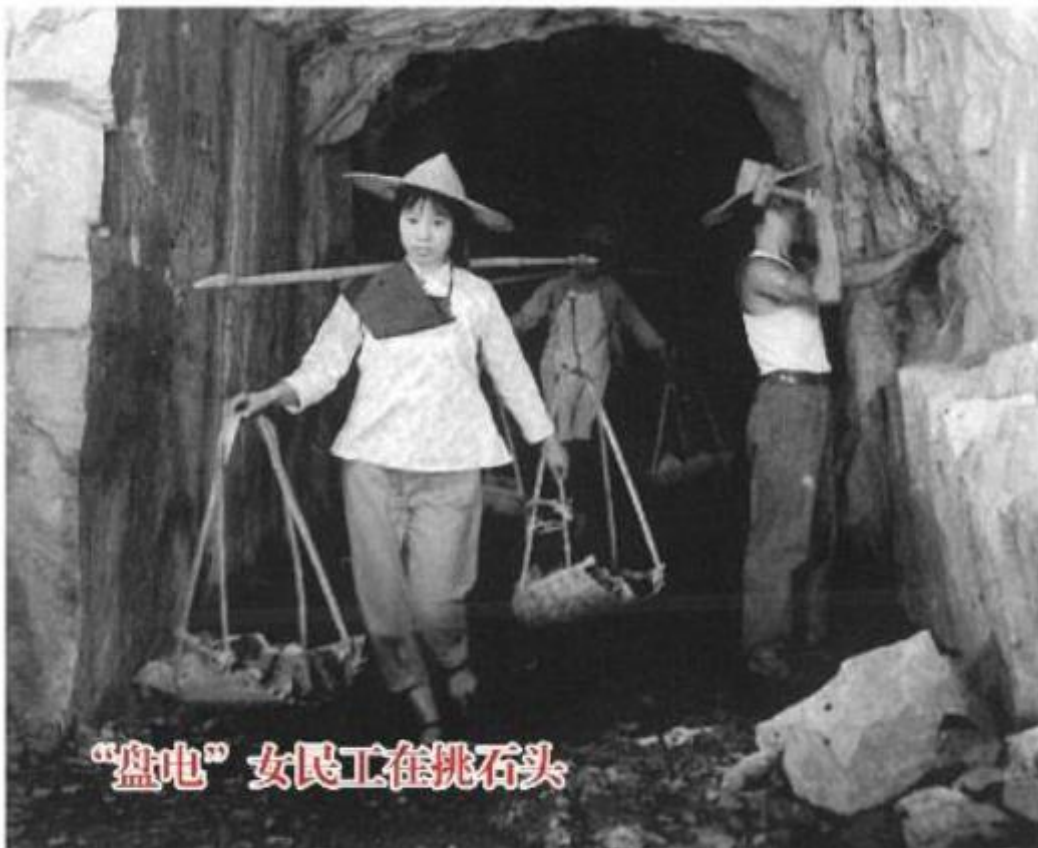






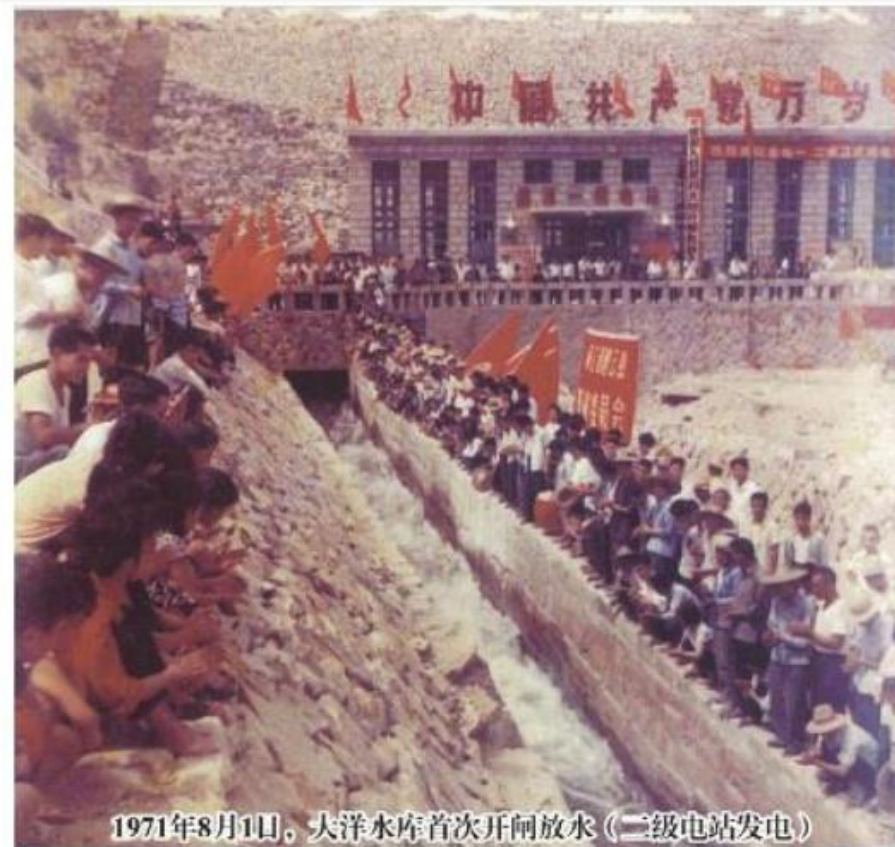






“盘电”女民工在挑石头

Female workers of Panxi Plant are carrying stones



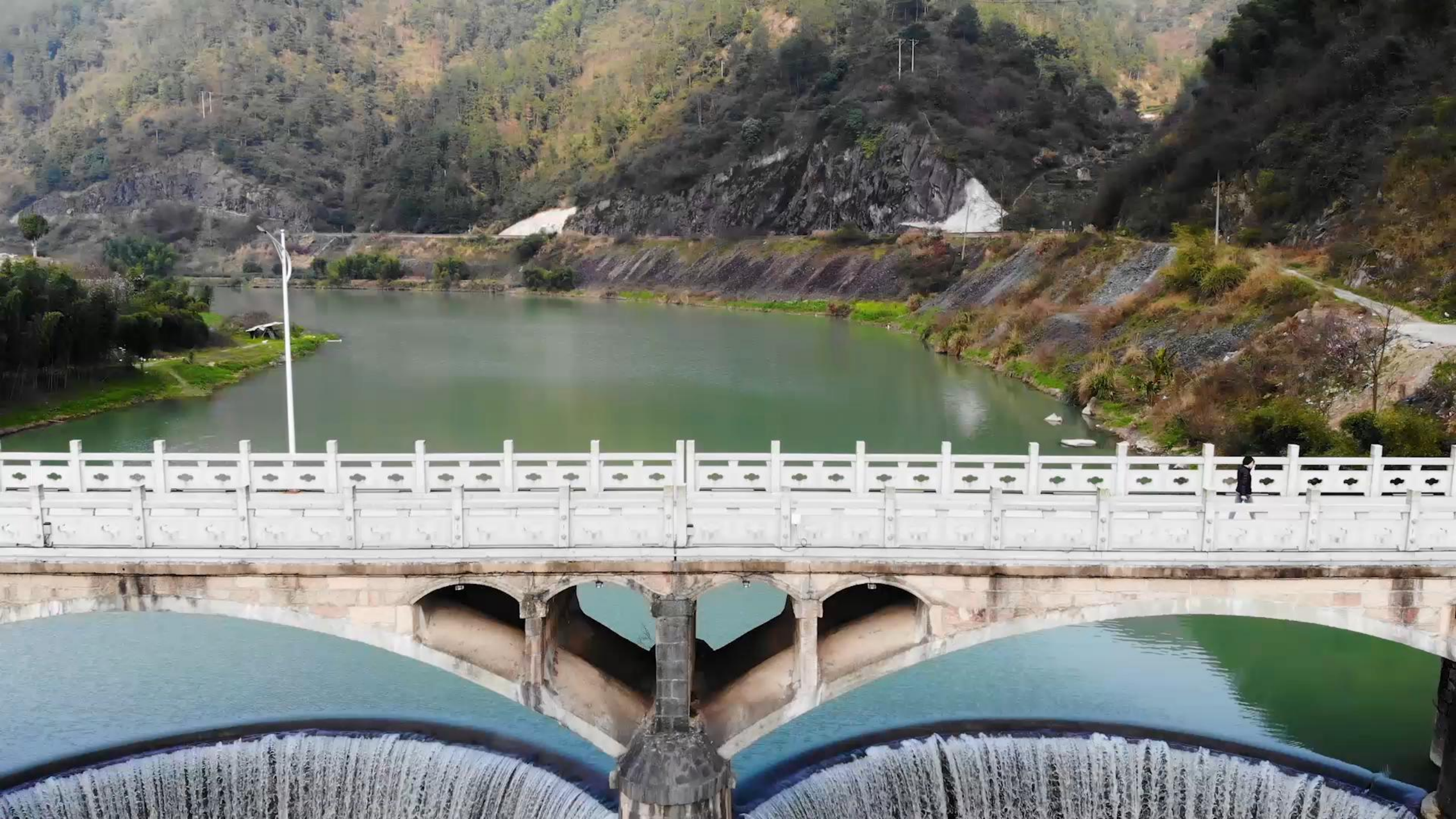
1971年8月1日，大洋水库首次开闸放水（二级电站发电）

The first generation of Dayang Second Cascade Hydropower Plant on August 1st, 1971







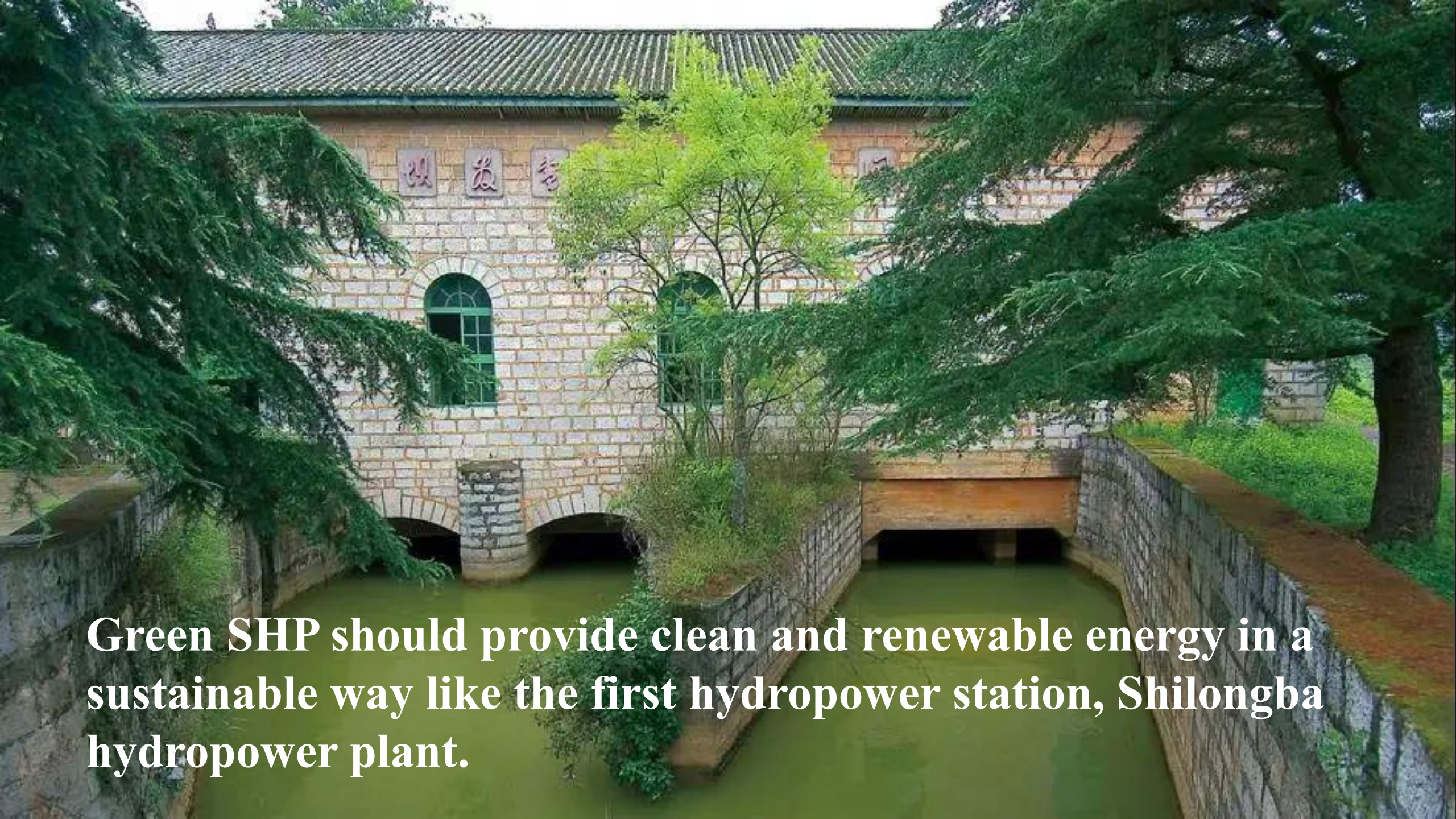




**Green SHP should follow the rules  
of nature, just like the water mill  
thousands of years ago.**

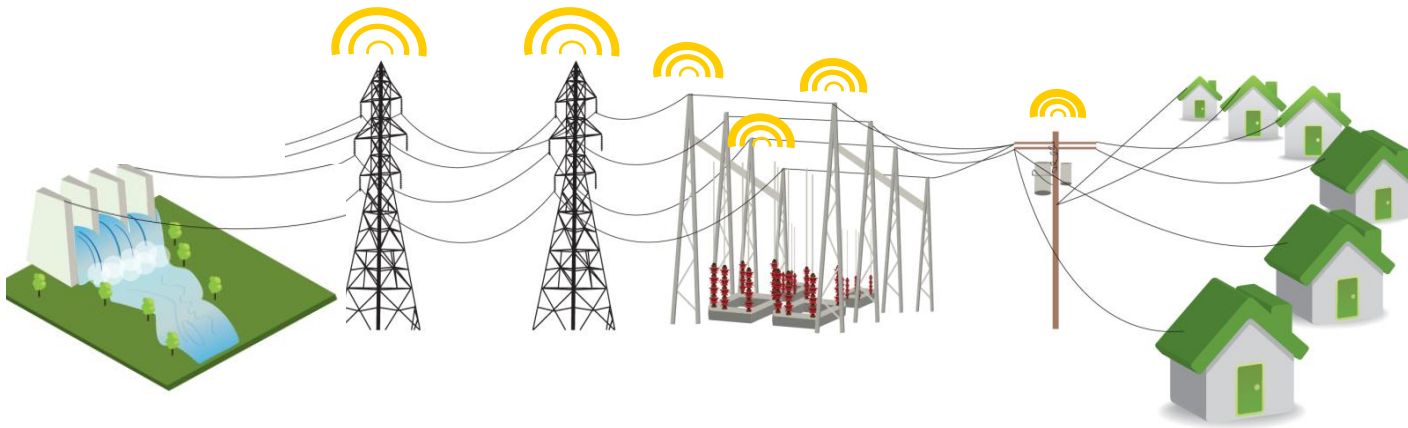






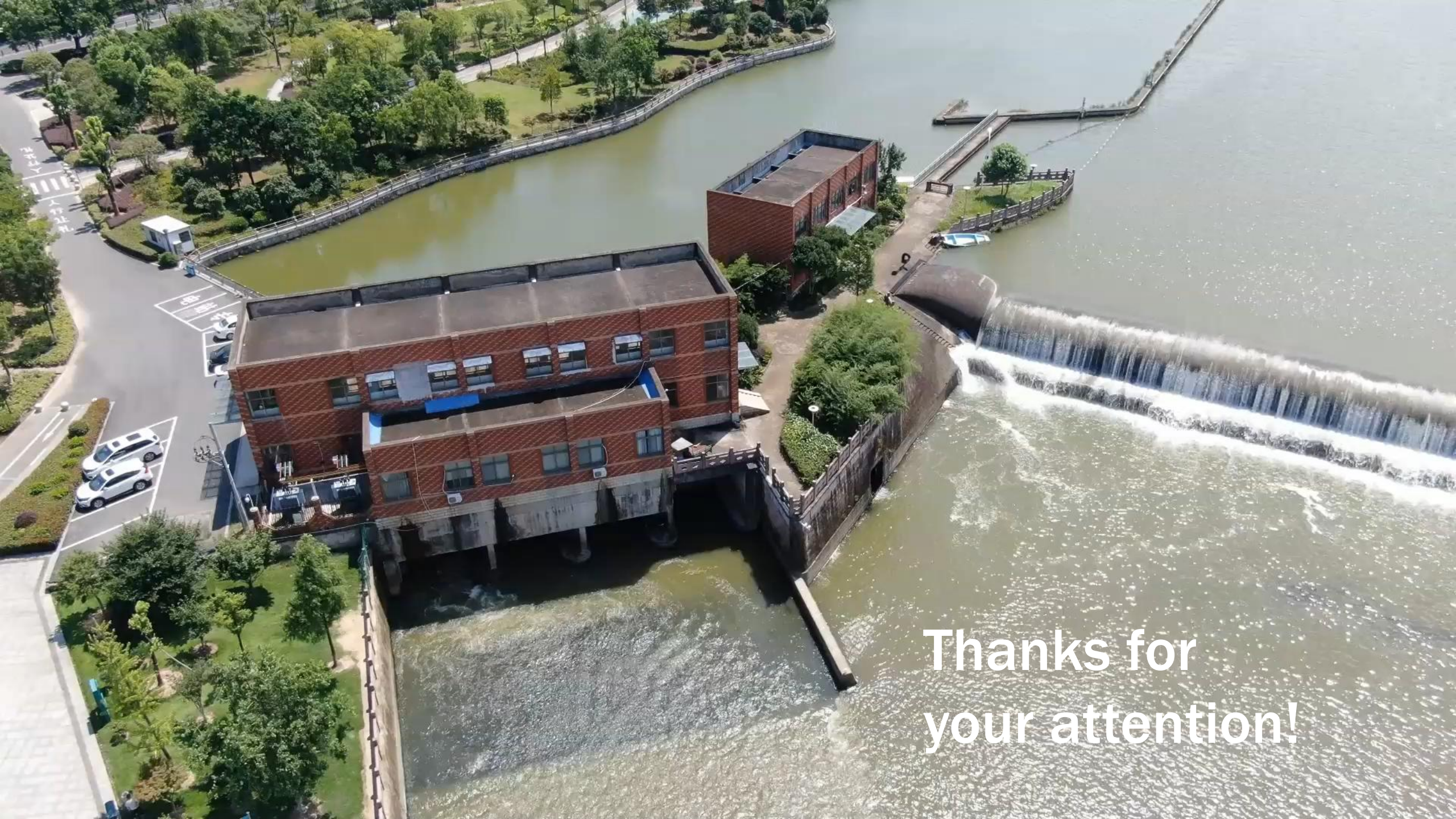
**Green SHP should provide clean and renewable energy in a sustainable way like the first hydropower station, Shilongba hydropower plant.**





**Green SHP should also root in the rural development and support local economy and communities like the Panxi hydropower plants.**





Thanks for  
your attention!